

State of Wyoming Corner Record

(In compliance with the CORNER PERPETUATION AND FILING ACT, Wyoming Statutes, 2013 Section 33-29-901 through 33-29-910, and the Rules and Regulations of the Board of Professional Engineers and Professional Land Surveyors)

Reverse side of this form may be used if more space is needed.

Record of original survey and citation of source of historical information (if corner is lost or obliterated). Description of corner monumentation evidence found and/or monument and accessories established to perpetuate the location of this corner. Sketch of relative location of monument, accessories, and reference points with course and distance to adjacent corner(s) (if determined in this survey). Method and rationale for reestablishment of lost or obliterated corner.

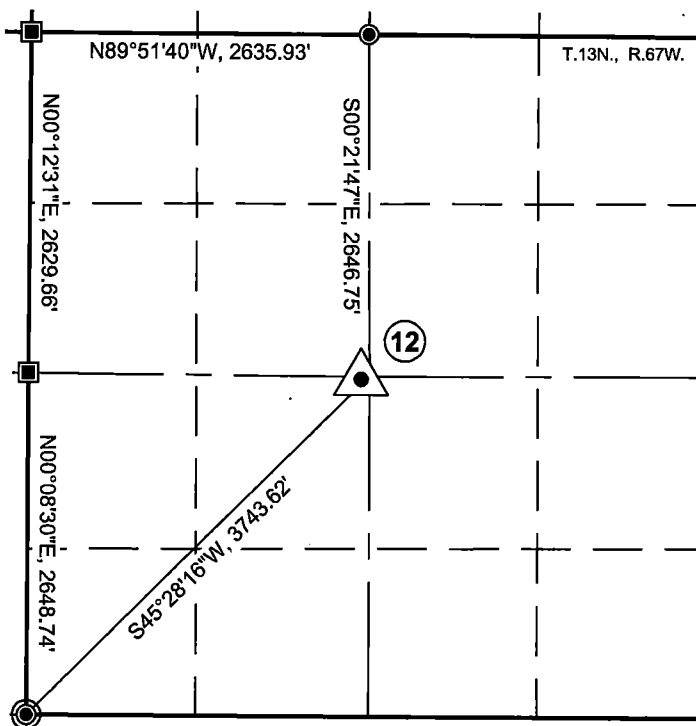
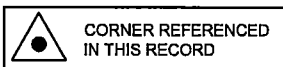
RECOVERED: Aluminum Cap on Rebar in a pile of stones; SSS, PLS 5910, 1996.

SET: Nothing

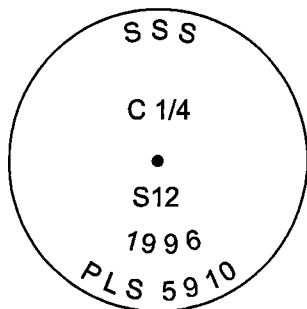


LEGEND

- SET ALUMINUM CAP
- EXISTING ALUMINUM CAP
- EXISTING IRON PIPE
- EXISTING REBAR
- EXISTING STONE
- EXISTING BRASS CAP



MONUMENT INSCRIPTION



Date of Field Work: 06/20/2019 to Present

Project No.: 2019-022

Point Number: 2827

Basis of Bearings: Wyoming State Plane Coordinate System, East Zone; Distances: Ground

CROSS INDEX PLAT

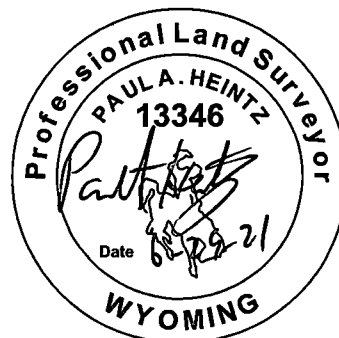
	1	2	3	4	5	6	7	8	9	10	11	12	13	14	15	16	17	18	19	20	21	22	23	24	25
A																									
B																									
C	6																								
D		5																							
E			4																						
F				3																					
G					2																				
H						1																			
I																									
J																									
K																									
L																									
M																									
N																									
O																									
P																									
Q																									
R																									
S																									
T																									
U																									
V																									
W																									
X																									
Y																									
Z																									
	1	2	3	4	5	6	7	8	9	10	11	12	13	14	15	16	17	18	19	20	21	22	23	24	25

Prepared/Filed By:
Paul A. Heintz

WWC Engineering
5880 ENTERPRISE DR, STE 600
CASPER, WY 82609
(307) 473-2707

This corner record was prepared by me or under my direction and supervision.

SEAL & SIGNATURE



RECP #: 814342
RECORDED 7/7/2021 AT 11:08 AM BK# 2744 PG# 184
Debra K. Lee, CLERK OF LARAMIE COUNTY, WY PAGE 1 OF 1

Corner Name: Center Cor., Section 12 T.13N., R.67W., 6th P.M.

Laramie County, Wyoming

Cross Index: G-23